

This report provides an overview of Windows-based machine boot and login steps, as well as a breakdown of the login process. Other information, such as processes, domain and group policy are also included.

Login Records for administrator

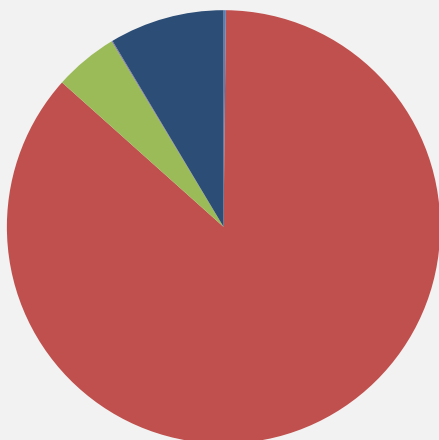
Total Logins Captured	2
Average Login Time (in seconds)	22.0
This Login Event (in seconds)	24.0
This Login Event Date	May 20, 2016 01:18 PM

Machine Boot and Login Steps

	Start	End	Duration
Computer Group Policy Service	-5.052	-4.355	0.697
Authentication	0.000	0.040	0.040
User Profile Service	1.078	21.824	20.746
Main User Group Policy Service	21.825	22.966	1.141
Update Per User System Parameters	22.967	22.981	0.014
Themes Logon	23.020	23.022	0.002
Restore Network Connections	23.064	23.064	0.000
Other	---	---	2.057
Post Login Activity	24.102	54.236	30.134

The login step 'Other' represents identified processes and events that fall outside of the main captured categories (for example, client extensions and user GPO), that contribute to overall login delay.

Login Breakdown



Top 10 Processes (launch time in seconds)

userinit.exe	30.1
SolarApp.exe	29.3
conhost.exe	29.1
DropboxUpdate.exe	27.9
Bluebeam Admin User.exe	19.3
AdobeGCCClient.exe	19.2
dllhost.exe	19.0
msiexec.exe	18.4
nvspcaps64.exe	17.0
dllhost.exe	10.2

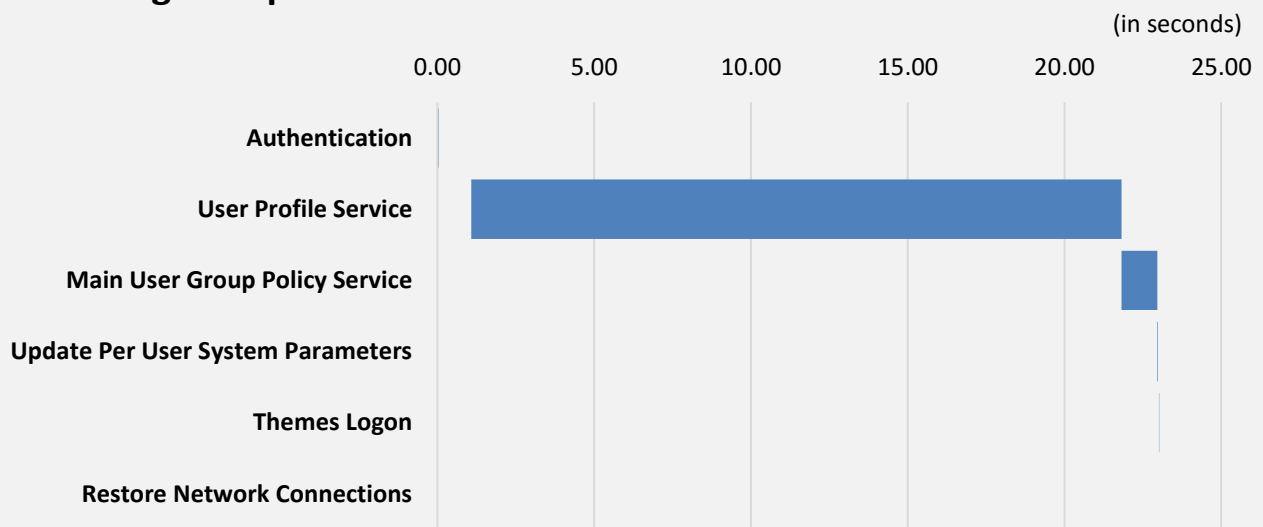
Total Processes Count	45
Processes Running Over 5 Seconds	5



Machine Information

Name	young-aaron7.ashleymcgraw.com	CPU Cores	2
Make	Dell Inc.	Memory Allocated	8126 MB
Model	Precision WorkStation T3400	Operating System	Windows 7
		Age	49 Months

Main Login Steps



Domain, Group Policy and Script Summary Details

Doman Controller Name	\\\\ZV-DC10Server.ashleymcgraw.com
Domain Name	ashleymcgraw.com
User Common Name	CN=YOUNG-AARON7,OU=ProfileUnity,DC=ashleymcgraw,DC=com
User GPO Found	Yes
Slow Link	FALSE
Policy Application Mode	Foreground synchronous
Background Processing	FALSE
GPO Scripts Found	Yes
Script Hidden	TRUE
Script Minimized	TRUE
Synchronized	FALSE
Script Type	Logon script

User Experience Monitoring and Diagnostics Solution

Stratusphere UX is a comprehensive monitoring, diagnostics, performance validation and optimization solution that provides the visibility required to more effectively manage desktop performance and the user experience. The solution supports all Windows-based delivery approaches, including virtual and mixed-platform (Citrix, VMware and physical) desktop environments.

Unlike physical desktops, virtual desktop workloads are supported by a shared infrastructure comprised of hosts, storage, networking and a spectrum of applications and services. Stratusphere UX provides a view of all users, all machines, and all applications—all of the time. This user-centric approach monitoring and diagnostics is necessary to gain insight into the user experience and being able to trend that experience over time. Stratusphere UX also extends and complements other systems and infrastructure monitoring tools.

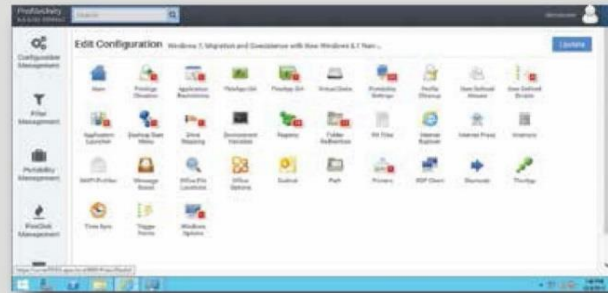


Diagnostic Drill Down Quickly Get to the Root Cause and Minimize Risk	Operations and First Tier Support Manage to the Information that Matters Most	Performance Validation and Optimization Enhance User Experience to Drive Success	Baseline and Onboard Users Quantify the Journey with Metrics that Minimize Risk and Define Success
---	---	--	--

User Environment Management and Application Layering

ProfileUnity delivers industry-leading User Environment Management and includes FlexApp Application Layering options. The solution unifies user profiles, policies, and user-data management to speed any Windows logon, streamline management, and end OS migrations for users. FlexApp Application Layering enables both Administrator-assigned and user installed applications.

ProfileUnity provides exclusive built-in features such as Application Rights Management, ProfileDisk profile layering options, and a built-in point-and-click high-availability design. Policies, application access, and profiles are context-aware, enabling users to uniquely experience their Windows workspace based on the location, type of session, group attributes, or regulatory compliance standards that your organization must meet.



 Windows Migrations To newer Windows OS versions and virtual desktops	 Profile Management Replace Roaming Profiles and Folder Redirection	 Environment Management Manage GPO for Drivers, Printers, Applications, etc.	 Application Layering FlexApp keeps base image management to a minimum.	 Desktop Disaster Recovery Replicate persona, data, & applications to secondary DR sites
--	--	---	--	---



About Liquidware Labs

Liquidware Labs™ provides desktop transformation and workspace management solutions for hybrid Windows desktop environments including Citrix®, VMware® and physical Microsoft® Windows PCs. Stratusphere™ FIT and Stratusphere™ UX solutions deliver visibility into desktop environments and support assessment, design, monitoring and diagnostics (Health Checks). ProfileUnity™ provides just-in-time delivery of User Profiles, context-aware policies, and Application Rights Management. FlexApp™ is an integrated feature of ProfileUnity that enables administrator and user level application layering. Flex-IO™ supports IOPS acceleration in virtual desktop environments. The solutions are available in an extremely cost-effectively priced bundle called Liquidware Labs Essentials. Liquidware Labs solutions are Citrix Ready and are available through a global network of partners. Visit www.liquidwarelabs.com for further information.

