

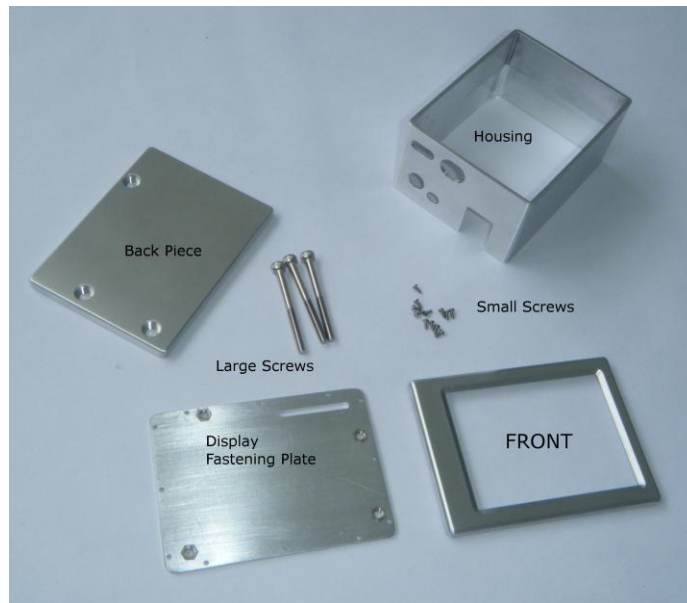
Enclosure for Liquidware SLIDE



The enclosure is an all aluminum enclosure that will protect your SLIDE and your electronics.

Features:

- Designed Specifically for the Slide and Arduino platform
- Light weight Aluminum design with minimal size addition to the display and electronics.
- Can hold a stack of SLIDE + Duemilanove + Lithium Backpack.
- Openings for Power supply, Charging and Programming

Kit contains:

- Front piece
- Back piece
- Display fastening plate
- Housing
- Three M3 screws
- Twelve M1.2 screws

Tools needed:

- Small flathead Screwdriver
- 3mm hex key
- Alcohol swab
- Optional tools: Tweezers, Exacto knife

Installation instructions:

1. Go through the kit and identify all the parts
2. Identify the Front piece

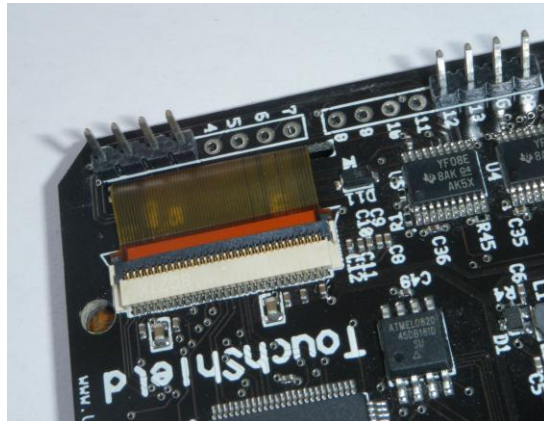


3. Place face down
4. Remove the clear plastic tape on the black sealing tape. You have to remove the tape on each of



the 4 sides of the display

5. Take out your SLIDE. ***** Be very careful when performing this step or your SLIDE can be permanently damaged! ******
 - a. Place the SLIDE glass down on a soft clean surface.
 - b. Carefully open the connector for the flex cable from the OLED to the SLIDE PCB.
 - i. Use a small screwdriver to gently lift up the black part of the connector.



- ii. Place the screwdriver by the orange cable and lift up **GENTLY**. The black part is hinged on the white part and the black part will swing up from the orange part.



- iii. When the black part is open (up) the cable should slide out easily from the connector.

- c. Separate the OLED and the PCB.

- i. When the cable is loose use a screw driver to gently pry the OLED off the PCB. Apply even pressure around the whole OLED until the OLED separates from the



PCB.

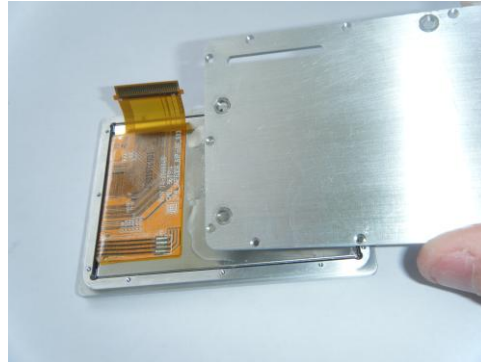
- ii. When the OLED and PCB have separated gently thread the cable through the PCB .

- 6. Clean the OLED glass with an alcohol swab

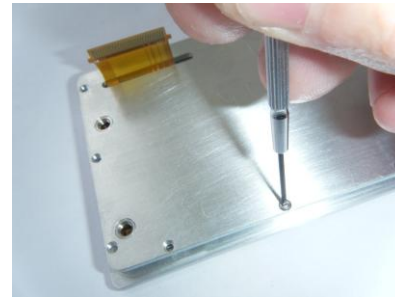
- 7. After the alcohol has dried from the OLED glass, place the glass carefully in to the front so it is



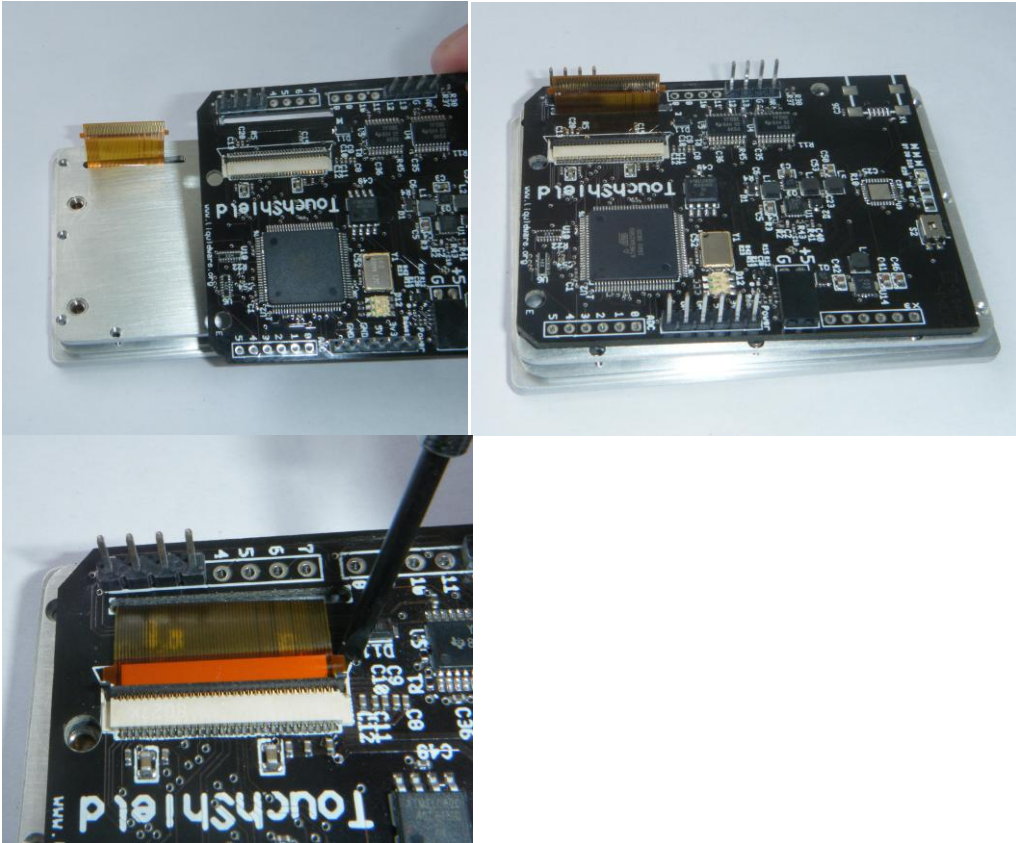
centered in the Front piece.



8. Take out the Display fastener plate.
9. Thread the flex tape from the OLED through the slot in the Display fastener plate. The black tape on the Display fastener plate needs to go towards the OLED.



10. Align the 1.2mm screw holes and install the 12 screws.
11. Thread the flex tape through the slot in the OLED PCB and plug it back into the connector. Lock the locking clip on the connector when the cable is installed. Be very careful to not put any stress on the flex cable. The PCB is only attached to the rest of the assembly with the Flex cable!

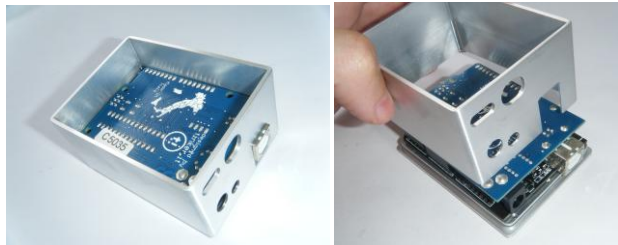


12. Take the Duemilanove PCB and insert into the OLED PCB. Again take care so you don't put any

stress on the flex cable.

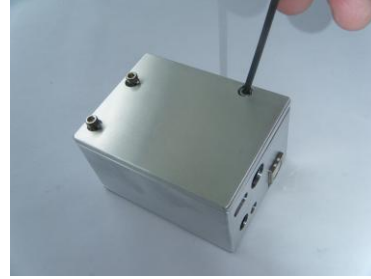


13. Place the housing over the PCB's.



14. Take the three M3 screws and insert through the Back piece.

15. Place the back piece on the Housing making sure the screw holes are aligned with the holes on the PCB's.



16. Tighten the three M3 screws. **DO NOT OVERTIGHTEN!!**
17. Enjoy!